



WHAT IS THE COLOR OF YOUR APPLICATION?

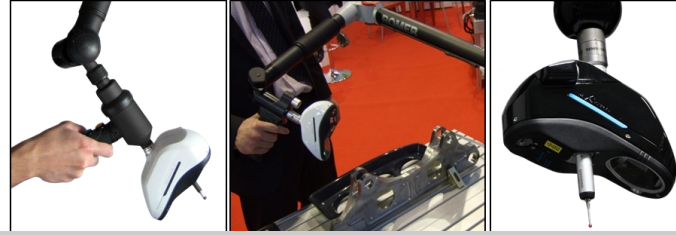
ZEPHYR II

ZEPHYR II BLUE

Kreon
The complete **3D** scanning solutions

« The most competitive solution for the most demanding applications. »

Born from the same technology of the bi-camera KREON AQUILON and taking benefit from the experience and success of the ZEPHYR, ZEPHYR II and Zephyr II_{blue} scanners are the most competitive solutions for the most demanding applications. ZEPHYR II and Zephyr II_{blue} are particularly well adapted to applications that both require speed and accuracy.



ZEPHYR II scanners are used for:

- High speed 3D scanning
- First article inspection
- Reverse Engineering of clay models
- Diagnostic of assembly problems
- Casted metal parts alignment
- Part to CAD comparison
- Inspection of sheet metal parts



ZEPHYR II_{blue} scanners are used for:

- Fast and accurate 3D scanning
- Geometric features inspection
- Turbine blade inspection
- Gap&Flush inspection
- Rubber and plastic parts inspection
- GD&T of mechanical parts
- Tools and Dies inspection

AQC: Auto Quality Check

The AQC makes it possible to control automatically scan data quality: automatic compensation of the different material's optical characteristics is performed during scanning to guarantee superior data quality. This provides maximum surface flexibility to capture shiny parts in their natural state without prior surface preparation.

Functions to evaluate optimal scanning distance and display of real-time preview of scan data are also available. Scanning speed is totally under user control and adjustable according to the data density required by the application.

TECHNICAL SPECIFICATIONS

ZEPHYR II-100

100 mm (3.94")
250 000 pts/s
80 µm (0.0031")
95 mm (3.74")
130 mm (5.12")
15 µm (0.0006")
15 µm (0.0006")
20 µm (0.0008")
Yes
Yes
Red, class 2M
USB
Articulated arms, CNC machine tools, manual and driven CMMs
MIH, PH10 T, PH10 M/MQ Multiwire and IS1-2
Hard probe, Renishaw TP 2/20/200

ZEPHYR II_{blue}-70

70 mm (2.76")
250 000 pts/s
50 µm (0.002")
75 mm (2.95")
75 mm (2.95")
10 µm (0.0004")
10 µm (0.0004")
15 µm (0.0006")
Yes
Yes
Blue, class 2M
USB
Articulated arms, CNC machine tools, manual and driven CMMs
MIH, PH10 T, PH10 M/MQ Multiwire and IS1-2
Hard probe, Renishaw TP 2/20/200

Laser line length

Maximum acquisition rate

Line resolution

Standoff distance

Field of view

Accuracy: Reproducibility
According to OSIS/WG3-09/2003

Typical probing error (MPE_P)
According to EN/ISO 10360-2

Multi stylus test accuracy (MPE_{AL})
According to EN/ISO 10360-5 or VDI 2617 part 6.2 (*)

AQC

Temperature compensation

Laser

PC communication

Machine interface

Renishaw compatibility

Probe compatibility under the scanner ()**

(*) for CMM with accuracy of 2,5 µm + L/350 or better

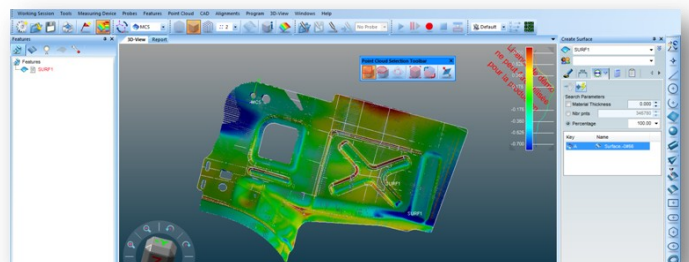
(**) KREON patent

SOFTWARE

Kreon Polygonia software can be delivered as a stand-alone application for point collection and processing or as a plug-in into the world's leading application software for 3D measurement, reverse engineering or quality inspection such as:

Metrolog ([Metrologic Group](#)), PolyWorks ([InnovMetric](#)), CAPPs ([Applied Automation Technologies, Inc.](#)), Geomagic ([Geomagic](#)), PowerINSPECT ([Delcam](#)), Rapidform ([INUS Technology](#)), Inca3D ([Inspect3D](#)), SpatialAnalyzer ([New River Kinematics](#)), TeZetCAD ([TeZet](#)), Verisurf ([Verisurf Software, Inc.](#)), 3DReshaper ([Technodigit](#)), Scantools (PG Innovations) and DeZignWorks ([Creative DeZign Concepts](#)).

Moreover, the Kreon Toolkit offers all the necessary development tools to interface KREON scanners, as well as all the CMMs and arms supported by Kreon, in any third-party application.





Kreon Technologies

Ester Technopole
1, av. d'Ester - porte 13
87069 Limoges Cedex - France

Tel: +33 (0)5 55 42 80 40 - Fax: +33 (0)5 55 42 80 08
www.kreon3d.com - info@kreon3d.com

Kreon
The complete **3D** scanning solutions