

## derma *TOP*-blue RELIABLE ANALYSIS OF HUMAN SKIN

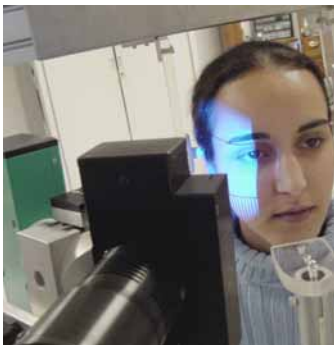
### Analysis of skin roughness, wrinkles, cellulitis, wound healing:

Our in-vivo-3D-Scanner **derma *TOP*-blue** was specially optimized for dermatological and cosmetic purposes and enables a precise measurement and examination of human skin without the need of replicas.

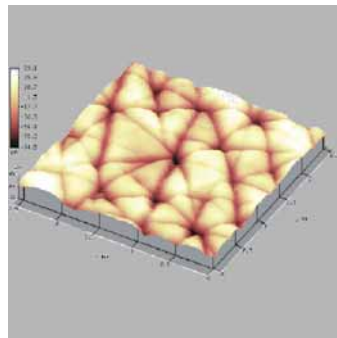
The use of a blue LED as light source allows the representation of the skin structure with optimal contrast. This guarantees a still more reliable analysis of the skin roughness and other characteristic parameters of the skin.

Here are the key features of the **derma *TOP*-blue** system in brief:

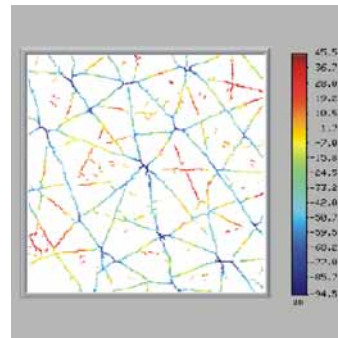
- ❑ The very rapid measurement of the skin, between 300 - 400 milliseconds per image, enables direct in-vivo-analysis
- ❑ Scanning of the skin is performed non contacting and without any effect upon the patient
- ❑ A digital camera with 1.384 x 1.036 pixel and digital zoom guarantees the highest resolution
- ❑ The user can select between three measurement fields, which are optimized for the varying tasks to be performed
- ❑ The sensor of the **derma *TOP*-blue** system is very light, with it's weight of only 1.5 kg
- ❑ The entire system can be controlled by a laptop computer and is thus easily and quickly transportable



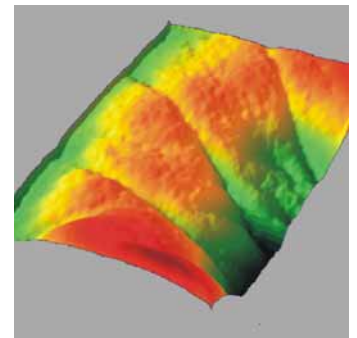
derma *TOP*-blue



Skin lines - 3D-view



Skin line distribution



Wrinkles

The visualisation and analysis of the measured data can be performed, depending on the application, according to various available criteria :

- ❑ As standard, roughness parameters  $R_a$  and  $R_z$  are available
- ❑ In addition to these, other characteristics concerning skin roughness (waviness, profile) can be quantitatively measured
- ❑ Correlated images, e.g. before and after treatment, can be compared to each other, e.g. for cosmetic application
- ❑ Further applications are, for example, the measurements of wounds and scars

In studies, a good correlation with measurements made by laser profilometers was demonstrated.

**derma TOP-blue** RELIABLE ANALYSIS OF HUMAN SKIN

**Technical Data**

**Image processing**

Host computer .....	Core™2 Duo, ≥2 GHz, ≥2 GB RAM, ≥60GB Open-GL Graphic adapter, DVD-writer
Image data interface.....	IEEE 1394-Interface (FireWire®)
Operating system.....	Windows XP
Measurement Software .....	OPTOCAT for Windows
Data interface.....	SDF, ASCII, STL, BRE

**Sensors**

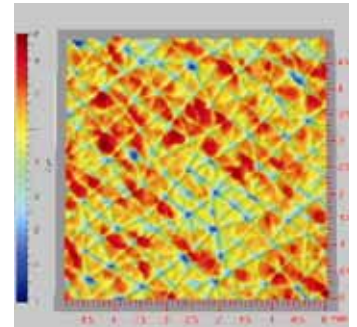
Projection unit .....	Miniaturized projection technique
Light Source.....	blue high-performance LED
Sensor weight .....	1.5 kg
Imaging .....	high resolution digital camera
Digitisation .....	1.384 x 1.036 pixel
Depth resolution.....	approx. 2 µm
Acquisition time .....	approx. 300 - 400 msec

**Options**

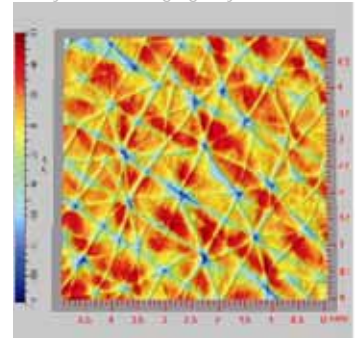
Host computer .....	Notebook or Laptop
Software options.....	TOPOSURF
Positioning equipment .....	Tripod, Swivel arm, Height adjustable table tripod

**The specifications of the derma TOP-blue system**

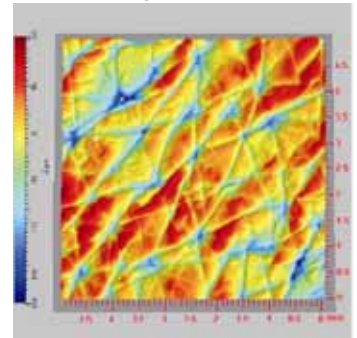
Measurement field [mm]	20 x 15	40 x 30	80 x 60
Depth of measuring volume [mm]	6	20	40
Operating distance [mm]		210	
Digitisation [pixel]		1384 x 1036	
Meas. points distance [µm]	15	30	60
Lateral resolution [µm]	8	15	30
Depth resolution [µm]	2	4	8
Repeatability [µm]	1	2	4



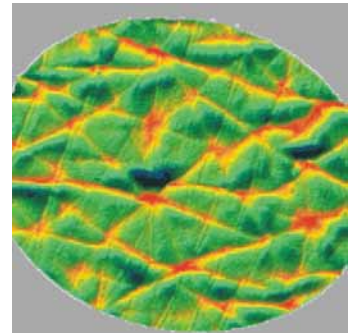
Analysis of skin aging, 40 years



Human Skin, 50 years



Human Skin, 70 years



Replica

Breuckmann GmbH  
 Industrial 3D Image Processing  
 and Automation  
 Torenstr.14 · D-88709 Meersburg  
 Tel: +49 (0) 75 32 - 43 46 0  
 Fax: +49 (0) 75 32 - 43 46 50  
 info@breuckmann.com  
 www.breuckmann.com