

Application DIGITIZATION OF THE "WEARY HERAKLES" STATUE

digitization of the "Weary Herakles" statue in Antalya, Turkey

This is a statue of the Greek demi-god Herakles, which dates to the 2nd century AD.

The upper half was first seen in the USA in the early 1980s. It is currently to be found at the Boston Museum of Fine Arts.

The lower part was found by Prof. Jale Inan in a excavation in Perge (Antalya) in 1980.

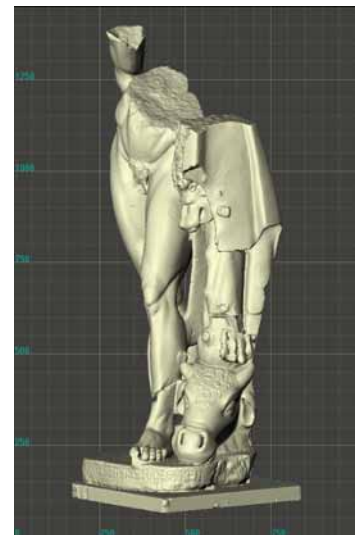
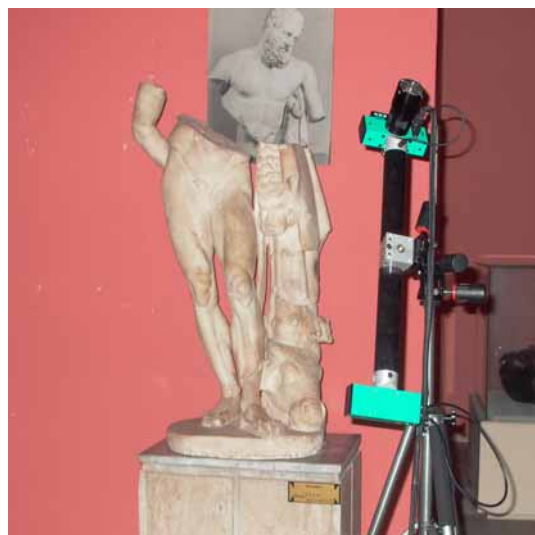
It is now on display in Antalya Museum, along with a photograph of the top half.

The digitization of the lower part of the statue was done in September, 2005, in the Museum of Antalya with an optoTOP-HE sensor with a field of view of 700 mm.

The complete scan was realized with 67 images from different directions. The alignment of the different views was done by means of the object geometry. No additional markers have been used.

The whole project was carried out in cooperation with

- ❑ Department of Geodetic and Photogrammetric Engineering, Yildiz Technical University, Istanbul (Prof. Dr. Ayhan Alkis and Prof. Dr. Zubeyde Alkis)
- ❑ Institute of Geodesy and Photogrammetry, Swiss Federal Institute of Technology (ETH) Zurich (Prof. Dr. Armin Gruen)
- ❑ our Turkish reseller, Info+TRON, Istanbul



Breuckmann GmbH
 Industrial 3D Image Processing
 and Automation
 Torenstr.14 · D-88709 Meersburg
 Tel: +49 (0) 75 32 - 43 46 0
 Fax: +49 (0) 75 32 - 43 46 50
info@breuckmann.com
www.breuckmann.com